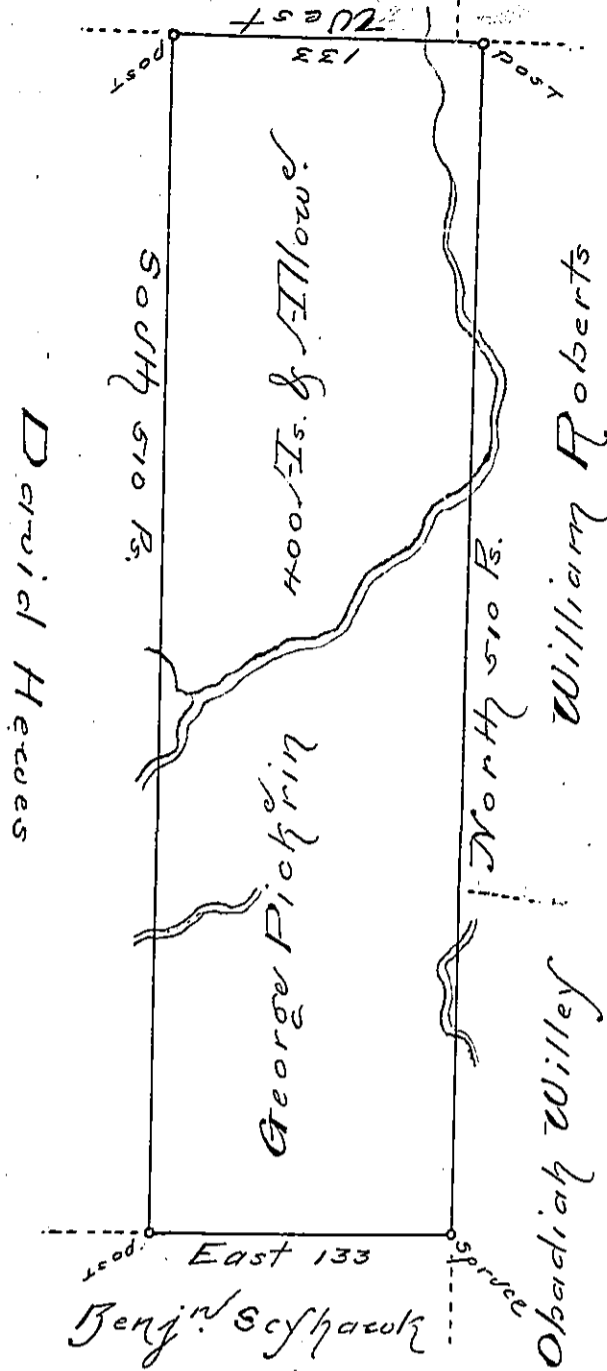


Sam'l Landale
Joseph Landale
p. 33-465 71



A Draft of a tract of land called
 Situate on the waters of Weyolusing Creek Joining
 Land Surveyed for David Heaves & others in North-
 umberland County containing four Hundred acres
 & allowance of six P. Cent for roads &c.

Surveyed for George Pickerin the 15th Day of
 Nov^r. 1784 in Pursuance of a Warr^t. dated the 6th
 Day of July 1784
 To John Lukens Esq^r } now by Wm Gray Esq.
 Sur^r. Gen^l. } Luzerne

W. J. W. in the name of Joseph Scull - Ser^v No 352 North Co.

IN TESTIMONY that the above is a copy of the original remaining on file in the
 Department of Internal Affairs of Pennsylvania, made con-
 formably to an Act of Assembly approved the 16th day of
 February, 1833. I have hereunto set my Hand and caused
 the Seal of said Department to be affixed at Harrisburg, this

— fourth — day of — August — 1896.

James Wattas
 Secretary of Internal Affairs.